

Technical data

| | | CS120i | CS150i | CS250i |
|--|------|-----------|-----------|-----------|
| Output with wood pellets (with approx. 7% water) | kW | 120 | 170 | 270 |
| Output with wood chips (with approx. 25% water) | kW | 90 | 140 | 240 |
| Output with grain (with approx. 15% water) | kW | 90 | 140 | 240 |
| Minimum output at pause firing* | kW | 5,5 | 7,5 | 12,5 |
| Efficiency at nominal output | % | 90,1 | 91,9 | 91,1 |
| Efficiency at partial load** | % | 89,5 | 88,4 | 88,2 |
| Water content boiler | Ltr. | 660 | 750 | 920 |
| Flue gas outlet | mm | Ø215 | Ø215 | Ø250 |
| Supply connection | - | 2" | 2" | 2½" |
| Return connection | - | 2" | 2" | 2½" |
| Sprinklerconnection | - | ½" | ½" | ½" |
| Auger connection | mm | OK180/225 | OK180/225 | OK180/225 |
| Necessary chimney draft | Pa | 20 | 20 | 20 |
| Mains connection: 3x400V+0+PE – 16A | - | --- | --- | --- |
| Power consumption approx. | W | 250 | 340 | 422 |

* Indicative minimum load at pause firing

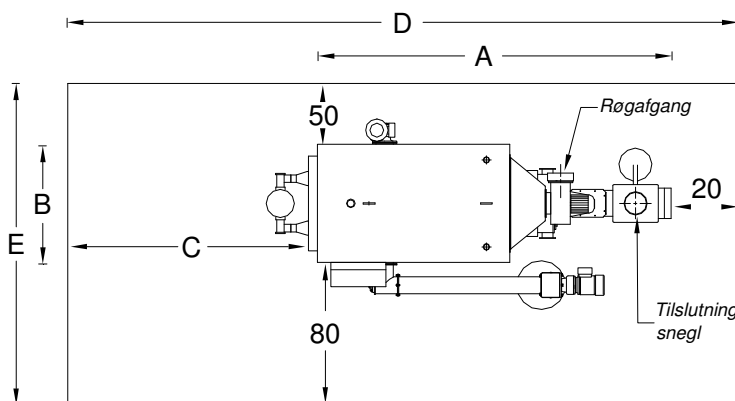
** Partial load is less than 30% of nominal load (measured at The Danish Technological Institute)

Measures

| | System dimensions | | Free space | Recommended dim. | |
|--------|-------------------|-----|------------|------------------|-----|
| | A | B | C | D | E |
| CS120i | 297 | 100 | 176 | 493 | 230 |
| CS150i | 341 | 106 | 180 | 541 | 236 |
| CS250i | 393 | 106 | 220 | 633 | 236 |

Measures in cm

*When using the automatic flue pipe cleaning system, or the rotary brush C and E can be reduced.



Boiler room seen from above - measures in cm.